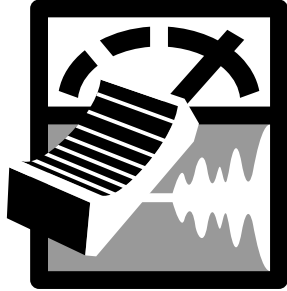


**LEXICON**



**STUDIO**

**lexicon**

---

---

---

---

---

*Core2  
User Guide*

---

---

---

---

---

## Unpacking and Inspection

After unpacking the system modules, save all packing materials in case you ever need to ship the units. Thoroughly inspect the modules and packing materials for signs of damage. Report any damage to the carrier at once; report equipment malfunction to your dealer.

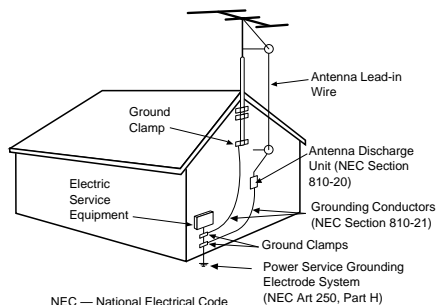
## Communications Notice

This equipment generates and uses radio frequency energy and if not installed and used properly, that is, in strict accordance with the manufacturer's instructions, may cause interference to radio and television reception. It has been type tested and found to comply with the limits for a Class B computing device in accordance with the specifications in Subpart B of Part 15 of FCC Rules, which are designated to provide reasonable protection against such interference in a residential installation. However, there is no guarantee that interference will not occur in a particular installation. If this equipment does cause interference to radio or television reception, which can be determined by turning the equipment OFF and ON, the user is encouraged to try to correct the interference by one or more of the following measures:

- Reorient the receiving antenna
- Relocate the computer with respect to the receiver
- Move the computer away from the receiver
- Plug the computer into a different outlet so that the computer and receiver are on different branch circuits.

If necessary, the user should consult the dealer or an experienced radio/television technician for additional suggestions. The user may find the following booklet prepared by the Federal Communications Commission helpful: "How to Identify and Resolve Radio/TV Interference Problems." This booklet is available from the U.S. Government Printing Office, Washington, DC 20402, Stock No. 004-000-00345-4.

Le présent appareil numérique n'émet pas de bruits radioélectriques dépassant les limites applicables aux appareils numériques de la class B prescrites dans le Règlement sur le brouillage radioélectrique édicté par le ministère des Communications du Canada.



### Outdoor Antenna Grounding

If an outside antenna is connected to the receiver, be sure the antenna system is grounded so as to provide some protection against voltage surges and built-up static charges. Section 810 of the National Electrical Code, ANSI/NFPA No. 70-1984, provides information with respect to proper grounding of the mast and supporting structure, grounding of the lead-in wire to an antenna-discharge unit, size of grounding conductors, location of antenna-discharge unit, connection to grounding electrodes, and requirements for the grounding electrode. See figure below.

**Power Lines** An outside antenna should be located away from power lines.

"ADAT" is a trademark of the Alesis Corporation.

"Cool Edit Pro" is a trademark of Syntrillium.

"Type IV" is a trademark of dbx Corporation.

Copyright ©1999, Lexicon Inc.  
All Rights Reserved.

Lexicon Inc.  
3 Oak Park  
Bedford MA 01730-1441  
Telephone 781-280-0300  
Fax 781-280-0490  
www.lexicon.com

# Table of Contents

<i>1 Getting Started</i>	
Introduction .....	1
System Requirements .....	2
<i>2 Installation</i>	
Precautions .....	3
Hardware Installation .....	3
Setup • Install the Card • Cables/Connections	
Software Installation .....	6
Install Supported Third Party Software • Install the Lexicon Studio Driver for Windows • Running the Setup.exe Program	
Updating Drivers .....	7
Remove the Old Software • Update Studio Driver • Reinstall Setup.exe	
<i>3 Using the LexPanel</i>	
Core2 Tab .....	11
Analog Input • dbx Type IV™	
Punch Tab .....	16
Configuring the Punch Tab • The MIX Level Control • The Monitor Buttons	
Clock Source Tab .....	18
<i>4 Using Cool Edit Pro</i>	
Installing Cool Edit Pro .....	19
Assigning I/O in Cool Edit Pro .....	20
Optimizing Multitrack Performance in Cool Edit Pro .....	21
<i>5 Troubleshooting</i>	
Common Problems and Solutions .....	23
Optimizing Windows for Audio Applications .....	26
<i>6 Specifications</i>	

Lexicon Inc.  
3 Oak Park  
Bedford MA 01730-1441  
Telephone 781-280-0300  
Fax 781-280-0490  
[www.lexicon.com](http://www.lexicon.com)

Lexicon Part # 070-13748

# 1

## ***Getting Started***

### *Introduction*

Thank you for your purchase of the Core2, Lexicon's 24-bit multitrack digital audio recorder, designed to give you the highest possible performance in your computer-based hard disk recording system.

Your Core2 package includes:

- a Core2 PCI card in an anti-static pouch
- a disposable anti-static wrist strap
- a breakout connector box
- a Core2 audio connector cable

NOTE: The Core2 cable is a shielded audio cable that has been manufactured specifically for use with the Core2. Use of any other cable will substantially reduce audio quality and may otherwise adversely affect performance.

- a CD containing the Core2 drivers, Syntrillium Software's Cool Edit Pro™ and a Read Me document with any late-breaking information.
- the Core2 User Guide (this document)

The latest updates in both software and documentation are available on our website at [www.lexicon.com](http://www.lexicon.com).

## *System Requirements*

The following systems are the minimum required for working with the Core2:

- an IBM-PC or compatible computer with PCI architecture expansion slots, a Pentium microprocessor (200MHz or faster), and minimum 64MB of RAM running Windows 95 or later
- a fast, high capacity IDE or SCSI hard disk drive
- peripheral audio equipment such as a mixer, power amplifier, DAT recorder, etc.

---

---

---

---

# 2

## *Installation*

### *Precautions*

- Turn off and unplug your computer.
- Use the anti-static wrist strap provided with your system and make sure that you are grounded during the entire installation process to prevent static charges that can damage components.
- Put the anti-static bags containing your cards near your computer to avoid walking around with a card and generating static electricity after it is removed from its bag.
- Before handling any Lexicon Studio cards, discharge any personal static electricity that may be on your clothes or body by touching a grounded metal surface, such as the power supply case inside your computer.
- Handle the cards only by their edges, as you would a CD. Avoid touching the pins on the bottom edge of the cards.
- Save the anti-static bag containing your Lexicon audio card. This prevents static electricity from damaging sensitive electronic components on the card.

### *Hardware Installation*

As some Lexicon Studio software is installed into directories of your audio control software, you should install and verify that your audio software launches properly before installing Lexicon Studio (even though it will not be audio-capable until installation of the Lexicon Studio system). Please refer to your audio software manual for details on installation, and then proceed with Lexicon Studio hardware and software installation.

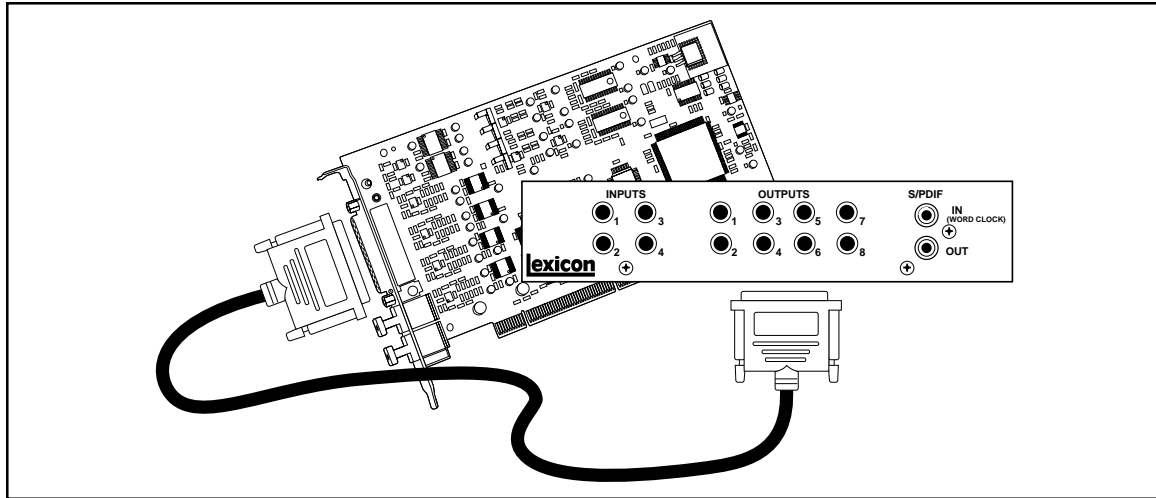
The Core2 card must be installed in a PCI slot which is a bus master slot to take advantage of its bus master capabilities. Refer to your computer owner's manual to determine which slots are available as bus masters. (On some older motherboards, the PCI slot next to the ISA bus connector [the PCI/ISA/ shared slot] is **not** a PCI bus master slot).

### ***Setup***

1. Put on the anti-static wrist strap.
2. Place the foam from your Lexicon Studio package on top of a work surface next to your computer.
3. Make sure that your computer is properly shut down and unplugged.
4. Remove the computer top cover and PCI slot cover(s) for the slots you've chosen for the Core2 card. If you do not know how to open your computer, consult the manufacturer's owner's manual.
5. Touch the computer power supply case to discharge any personal static electricity.
6. Remove the Core2 from its anti-static bag, holding the card only by its edges. Be careful to avoid touching the pins on the bottom edge of the card.

### ***Install the Card***

1. Align the Core2 card over the slot you've chosen and insert it.
2. Place one hand along the top edge of the card and push down firmly until the card is fully seated in the slot. Do not use excessive force.
3. Once the card is fully seated, attach the bracket to the computer chassis with the screws provided with your computer. If the computer is a tower or mini-tower design, check to see that boards are not bending under their own weight and shorting against each other.
4. Replace the cover on the computer. **Do not operate the system without the cover.**



Connecting the Core2 Card to the connector box.

### **Cables/Connections**

1. Use only the proprietary Lexicon cable (provided) to connect the Core2 card to the Lexicon Core2 connector box.
2. With the computer powered down, attach the cable between the connector on the back of the Core2 card and the Computer port on the connector box.
3. Connect your external audio devices to the connector box, or to the optical connectors on the Core2 card itself.

The connector box houses four unbalanced 1/4" analog inputs and eight unbalanced 1/4" analog outputs, as well as a coaxial S/PDIF input and output. The coaxial input can also be used as a Word Clock input. (See Chapter 3.)

The back plate of the Core2 card carries the optical connectors. These can be configured (via the Control Panel) to accept either ADAT™ or S/PDIF formats.

The Core2 can run in a variety of modes which affect the number and type of available I/O. These operating modes are described in detail in Chapter 3: Core2 Basics.

## Software Installation

### ***Install Supported Third Party Audio Software***

The Core2 requires compatible front-end software (such as Syntrillium Software's Cool Edit Pro) to operate. Please refer to your particular software installation guide for assistance. As Lexicon Studio installs software within directories of your front-end software, you should install your audio software first and verify that it launches properly before installing Lexicon Studio (even though it will not be audio-capable until installation of the Lexicon Studio system).

If you are installing a later version of Lexicon Studio software over your current Studio software, please skip to the next section entitled *Updating Drivers*.

### ***Install the Lexicon Studio Driver for Windows***

1. With your Lexicon Studio hardware and third party audio software installed, power up your computer. Once your computer is fully booted, Windows will identify your Core2 as a new PCI multimedia device. In the event of booting problems, refer to the troubleshooting section of this user guide.
2. The Windows Update Device Driver Wizard will appear. Insert the "*Lexicon Studio:Core2: Drivers & Documentation*" CD-ROM, and click the **Next >** button, allowing Windows to perform a search for the Lexicon Studio driver.
3. Windows will find the driver information for the **Lexicon Studio Sound System** on the CD-ROM. If it does not, you may need to **Browse** to it. If you encounter problems locating the first file, check to make sure the path is correct, then click **OK**. Click the **Finish** button.
4. When the drivers are loaded, you will be prompted to restart your computer. You should choose not to restart at this time and proceed with these instructions. Windows will prompt you twice to restart. Select **No** at both prompts.

---

---

### ***Running the Setup.exe Program***

1. Insert the “Lexicon Studio Core2: Drivers & Documentation” CD-ROM if you haven’t already.
2. Open the contents of the CD-ROM and double-click on **Setup.exe** to launch the Installer.
3. Click **Next >** at the Installer welcome screen.
4. At the summary screen, select the desired software and click **Next >** to choose it.
5. Click **Next >** to begin the installation.
6. Click **Finish** to complete the installation.
7. Cold boot your computer (even if you’ve already restarted after installing the Core2 Drivers).

To remove or update this software, remove the install by using the **Add/Remove Programs** control panel, highlighting **file**, and selecting **Remove**. This control panel is located at Start/Settings/Control Panel/Add/Remove Programs.

### ***Updating Drivers***

If you are installing a newer version of Lexicon Studio software over your current software, follow the steps outlined below.

#### ***Remove the Old Software***

As Lexicon Studio software is registered through the Windows Add/Remove Programs control panel, it must be completely removed to install a newer version. You should never have 2 different versions of the software installed simultaneously.

1. Go to Start/Settings/Control Panel /Add/Remove Programs.
2. Scroll down to **Lexicon Core2**.
3. Click the **Add/Remove** button.
4. Click the **Yes** button when asked “Are you sure you want to completely remove **Lexicon Core2** and all of its components?”.

5. Click **OK** to close the control panel



### ***Update Studio Driver***

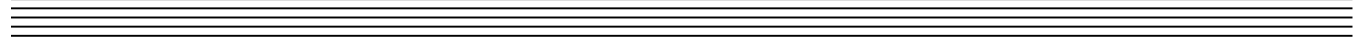
If you have a CD-ROM or have downloaded Lexicon Studio drivers with a higher revision number than those currently installed in your system, you should choose to update your driver. To do so, follow the directions below.

1. Go to Start / Settings / Control Panel / System.
2. Click on the **Device Manager** tab..
3. Open the directory for **Sound, Video and Game Controllers**.
4. Highlight **Lexicon IDS Sound System** by clicking on it.
5. Click the **Properties** button.
6. Select the **Driver** tab within the Properties page.
7. Click the **Update Driver...** button.

8. Windows will ask if you want to search for the driver. Select **Yes** (Recommended).
9. Windows will search the drive from which a driver was last loaded. If you installed drivers from floppy disk, it will check only the floppy drive. If you have loaded the updated drivers from different media, you will need to click the **Other Locations...** button and **Browse** to the CD-ROM for the new driver. If you encounter problems locating the first file, check to make sure the path is correct, then click **OK**.
10. Click the **Finish** button.
11. Windows will prompt you to restart. Select **No** when prompted and continue with these instructions.

### ***Reinstall Setup.exe***

1. Insert the “*Lexicon Studio Core2: Drivers & Documentation*” CD-ROM if you haven’t already.
2. Open the contents of the CD-ROM and double-click on **Setup.exe** to launch the Installer.
3. Click **Next >** at the Installer welcome screen.
4. At the summary screen, select the desired software and click **Next >** to choose it.
5. Click **Next >** to begin the installation.
6. Click **Finish** to complete the installation.
7. Cold boot your computer (even if you’ve already restarted after installing the Core2 Drivers).



# 3

## Using the LexPanel

All Core2 I/O controls are accessed via the Core2 Control Panel. The Control Panel can be accessed by double clicking on the Lexicon Studio icon in the Taskbar or from within an ASIO application (such as Cubase VST). The Control Panel allows you to select the number and type of active channels, the current clock source and sample rate mode, as well as punch routing.

The method of selecting tabs for different pages will be familiar to users of Windows and other Microsoft products. The selections are Core2, Punch, and Clock Source. Note that the Clock Source tab will not be present when using an ASIO application.

### Core2 Tab

This tab lets you determine which Core2 I/O streams are active. An active stream becomes available as a clock source, as a source/destination for Punch, and for use in the audio application.



Each I/O button on the Routing tab will turn on *all* of the corresponding inputs or outputs. Selections which are precluded by current selections appear in gray. A check box labeled **Optical** appears next to the S/PDIF buttons. When this box is checked, the optical connectors on the Core2 card will be set to the S/PDIF format — and the ADAT buttons will be unavailable for selection (gray).

Below is a table of possible configurations:

Option Number	Analog In	Analog Out	Coax S/PDIF In	Coax S/PDIF Out	Optical In	Optical Out
1	X	X	-	-	ADAT	ADAT
2	X	X	X	X	-	-
3	X	X	-	-	S/PDIF	S/PDIF
4	X	X	-	X	ADAT	-
5	X	X	X	-	-	ADAT

Press **Apply** or **OK** to save routing changes.

If you are using the Wave drivers, and make any changes to the Routing Tab in the Lexicon control panel, you *must* restart Windows in order to have these changes take effect.

If the ASIO drivers are being used, it is not necessary to restart Windows. Simply quit then re-launch the audio application to have the routing changes take effect. In Cubase, blank labels on the Input and Output buses indicates that the application must be restarted. If you are using Cubase and have launched the Lexicon Control Panel from the Windows taskbar, you must quit Cubase before making changes to the Routing Tab.

NOTE: At least one Input pair and one Output pair must be enabled in order to launch Cubase. If no streams are active, an error message will indicate that the ASIO Lexicon Studio V4.2 driver could not be loaded. If this occurs, quit Cubase, launch the LexPanel from the Windows taskbar, turn on one or more I/O streams, then re-launch Cubase.

### *Analog Input Levels*

The level of the Analog Inputs can be controlled by on-screen faders with the level displayed numerically at the bottom. A level setting of 0dB sets unity gain from the analog input to the analog output. A setting of 0dB corresponds to -10dBV, 18dB below digital full-scale.

The **Link** button between fader pairs allows them to be linked as a stereo pair for convenient identical gain setting. The left fader value takes precedence when **Link** is used to make the faders operate at the same level.

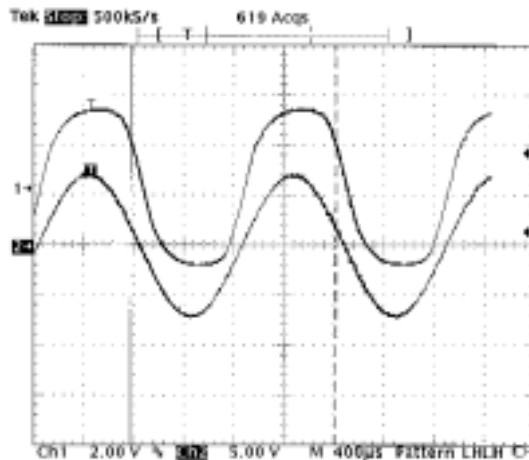
Control click on the **Link** button to link the fader heads while maintaining their relative levels.

Control click on a fader head to set the fader (or linked fader pair) to 0dB.

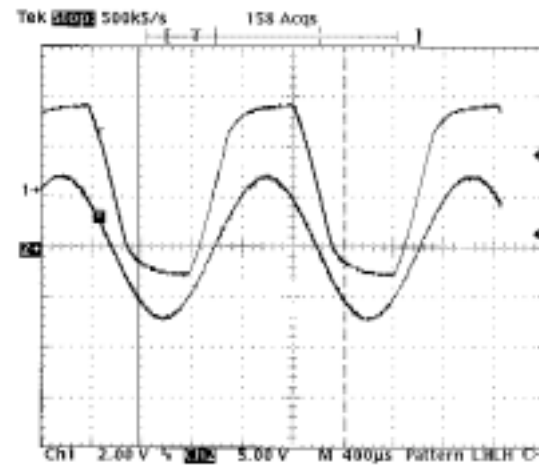
To enter gain levels numerically, double-click on a numeric field, then enter a value.

### dbx Type IV

The Core2 card comes equipped with the dbx Type IV Conversion System, featuring on-board Tape Saturation Emulation (TSE™). Type IV enhances the dynamic range of A/D converters by providing a logarithmic “Type IV Over Region” that extends the useable dynamic range beyond the linear range. TSE captures the sound of an analog tape machine in the saturation region.



Type IV On



Type IV Off

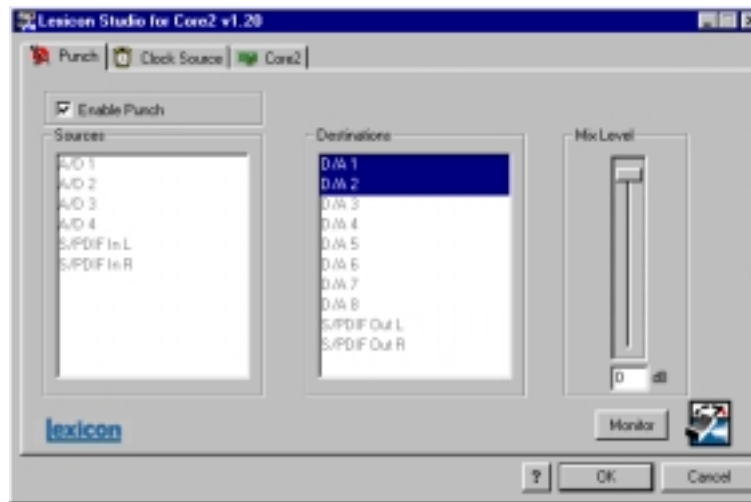
Type IV is turned on and off on the Core2 card via four jumpers located on the card itself. The card is shipped with all of these jumpers in the “in” position (Type IV on). The LED’s under the Type IV logo should be illuminated to indicate that each is active. To turn Type IV off on a channel:

1. Remove the Core2 card from the computer. Follow the precautions noted in the installation instructions.

2. Move the desired jumper to the “out” position. (The jumper nearest the edge of the card is for Analog Input 1.)
3. Replace the Core2 card in the computer, reboot, and launch the Lexicon Control Panel. The corresponding LED under the Type IV logo should be off (indicating that Type IV is inactive on this channel).

## Punch Tab

This page lets you select input Sources for Punch or overdub recording and output monitor Destinations for the sources selected for Punch or overdub recording. The Punch feature lets you perform overdub or punch recording by directly connecting to a Lexicon Studio interface — no external mixer is required.



All computer operating systems have a delay when applications use host processing. The delay will vary depending on the buffer size of the audio hardware. This means that, when playing along with previously recorded tracks, the track you are playing will sound delayed while you are performing. This delay can be overcome by using an external mixer, or by using the Punch feature.

The punch feature mixes the input signals directly with the outputs selected for your monitor system (speakers or headphones) to avoid the inherent processing delay from the card to the computer application and back.

Unlike monitoring through a tape deck where the input is typically monitored when the transport is in Stop or Record and muted during Play, the input signal is monitored *all the time*.

### *Configuring the Punch feature*

1. Select **Enable Punch** to turn on monitoring.
2. Select as many input sources as you like, clicking multiple selections with the **shift** or **Ctrl** key. Note that only those I/O selections which are currently enabled in the Routing tab will appear as Source and Destination selections.
3. Select the outputs you are using for monitoring. (Often the analog left and right outputs will be connected to an amp and speakers — digital connection to a mixer is, of course, also possible.) A mono mix of the selected inputs will be sent to the outputs.
4. If you are using Cubase, select **Global Disable** from the System Setup dialog to turn off the monitoring through the application so that a delay is not heard from the input signal.

### *The MIX Level Control*

**Mix Level** allows you to adjust the volume of the selected Punch sources that are mixed with the VST output assigned to the same outputs (usually “Master”).

NOTE: If multiple sources are being summed, the **Mix Level** may need to be lowered to avoid distortion. In such cases, try an initial setting of 40.

## The Monitor Buttons

When using an ASIO application (such as Cubase), the available sources and destinations of Punch are those which are active in Cubase. For example, to route Punch from the LDI-10T A/D 1&2 to LDI-10T D/A 1&2, you must activate the corresponding input and output bus in Cubase. Remember that the Lexicon Control Panel must be exited, then re-launched, each time a change is made to the Cubase active streams list.

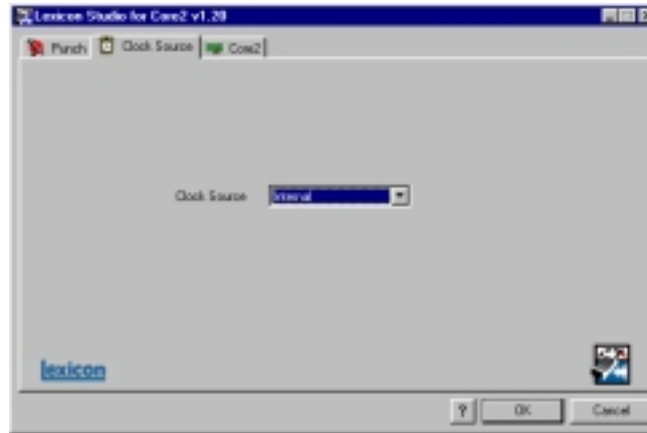
When using the Wave drivers, when the **Monitor** button is turned on, all channels will be available for selection as Punch sources/destinations. When the Wave audio application is in Play, only those channels which are in use in the audio application are available to Punch routing. This is true even when the audio application has been configured to keep its audio channels open in Stop. (Refer to the specific application's User Guide for details on how to set this up.)

When there is no audio application running (or when the application is in Stop and has not been configured to keep the audio channels open), all channels are available to Punch routing — provided the **Monitor** button is turned on.

The audio channels are held by whichever application window is in front. For example, if both CoolEdit Pro and the LexPanel are open, and the LexPanel is active, the audio channels are held by the Lexicon application. When CoolEdit Pro is brought to the front, it will hold the audio channels. This allows you to use the MMIO Punch/Monitor feature with a seamless transition between applications.

## Clock Source Tab

This tab will appear if you are using the Wave Control Panel. If you are using an ASIO application, clock source selection is made within the application.



If you are using a digital input, you must ensure that the Core2 and the external device are synchronized. There are three ways to accomplish this:

1. Make the external device the master and the Core2 the slave, by designating the external device as the Clock Source.
2. Make the Core2 the master by selecting Internal as the Clock Source, and setting up the external device to synchronize to the Core2 digital output.
3. Use a Word Clock source, such as a digital mixer, as the master and synchronize both the Core2 and external devices to it. In this case, select WC RCA as the Core2 Clock Source.

Note that the coaxial input can be used as a Word Clock input. If your Word Clock source uses a BNC connector, you must use a BNC-to-RCA adapter for this connection.

As there is no incoming clock with an analog input, use the Internal setting.

# 4

## *Using Cool Edit Pro*

### *Installing Cool Edit Pro*

Included with the Core2 is a special version of Syntrillium Software's Cool Edit Pro, a powerful multitrack audio recording and editing application. To install this software:

1. Insert the Lexicon Studio Core2 CD.
2. Press **Start**, and select **Run...** from the menu.
3. Select **Browse...** Click on the box labeled **Look In:** at the top of the window that appears. This will cause a list of your disk drives to appear.
4. Select your CD-ROM drive.
5. Locate a folder called **Syntrillium** and double click to open it.
6. Locate the file called **SETUP**, select it and run it.

The SETUP program will copy all of the necessary files to your hard drive. It will also add a program called **Cool Edit Pro - Core2** to the **Program** listings available from the **Start** button menu.

Cool Edit Pro comes with very thorough on-line manual/help. We suggest that you familiarize yourself with the items under the **Quick Reference** heading in the program's **Help** menu.

---

---

## Assigning Core2 I/O in Cool Edit Pro

Core2 inputs and outputs are assigned to tracks in two different ways, depending on the view (stereo waveform or multitrack) in which you are working.

In the stereo waveform view, select **Options/Settings/Devices**. In the window that appears, you can define **Waveform Playback** and **Waveform Record** devices. Simply highlight the Core2 inputs and outputs you want to use in the appropriate fields. These settings will apply for all files that you play or record when in the stereo waveform view.

In the multitrack view, inputs and outputs are assigned for each individual track. Before making assignments, you must set up **Preferred Multitrack Devices**. To do this,

1. Click on either of the small numeral 1's at the far left of the track display to open the **Playback Device** window.
2. Click on the **Device List** button to access a list of **Preferred Multitrack Devices**.
3. In each **Playback** field, assign a stereo Core2 output stream.
4. In each **Record** field, assign a stereo Core2 input stream.
5. Click **OK** on each window to back out to the Multitrack screen.

As these device settings are saved as **Preferences** in Cool Edit Pro, they will be used for all subsequent sessions until you change them.

To make the playback and record device assignments for a specific track,

1. Click anywhere in the gray area at the far left of the track display to open the **Track Info** window.
2. Click on the arrows in the **Playback Device** and **Record Device** fields to select the desired inputs and outputs.

---

---

## Optimizing Multitrack Performance in Cool Edit Pro

Because background mixing requires significant computer processing power, you may experience audio dropouts in multitrack playback during large sessions — particularly if background mixing is incomplete when playback is initiated. Although there are several things you can do to improve this, if you have a slower machine, you may still have to wait for a time before hitting **Play** when working with very large sessions.

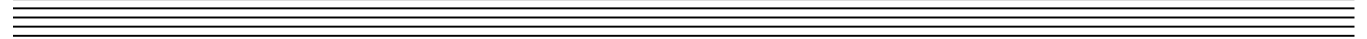
Careful adjustment of **Playback Buffer Size** and **Background Mixing Priority Level** (in **Options/Settings/Multitrack**) with reference to the **Mix Gauge** can improve efficiency. The **Background Mix Priority** must be high enough to keep the mix ahead of playback, but not high enough to slow down your computer's performance. Generally, you should keep this setting as low as possible while still keeping the **Mix Gauge** relatively filled. Raising the **Buffer Size** consumes more computer memory, and can adversely affect computer performance.

Adjust these settings by small amounts, using decimal increments/decrements as follows. When dropouts occur toward the end of background mixing (the **Mix Gauge** indicates mixing is more than three-quarters through), try reducing the **Playback Buffer Size** and raising the **Background Mixing Priority Level** (higher values *reduce* the priority level). If dropouts occur when the **Mix Gauge** is near empty, *increase* **Playback Buffer Size** and *lower* **Background Mixing Priority Level**.

The optimal settings for these controls will vary from session to session, with the number of tracks and the number of output devices.

Cool Edit Pro will take more time to perform background mixing when you have tracks assigned to multiple sets of Core2 outputs. In these cases, Cool Edit Pro creates a separate mix for each output device (each Core2 channel pair). If your system's performance is affected, you can temporarily assign all tracks to a single channel-pair while monitoring to speed things up. If you do this, we recommend checking **32-bit Pre-mixes** mode in the **Settings/Multitrack** screen. When monitoring to multiple output devices, **16-bit Pre-mixes** is the recommended mode.

Note that the 16-bit and 32-bit modes are playback settings only — the data on your disk stays at the resolution at which it was recorded.



---

---

---

---

# 5

## ***Troubleshooting***

### ***Common Problems and Solutions***

#### ***Power Up Problems***

If the computer will not power up after initially installing a Core2, the Core2 or another expansion card may be partially dislodged from the expansion slot on the motherboard. Symptoms may include keyboard lights on, power indicator lit, or the hard drive spinning. Remove the Core2 and verify that the system boots without it installed. Verify that the expansion cards are seated securely in the slots. Remove all peripheral devices from the Core2 including the connector box and cable. Replace the Core2 board in the PCI slot and reboot the computer.

#### ***Installation & Hardware Recognition***

##### **The Core2 is not recognized by Windows 95 when first installed.**

Make sure you have a Plug and Play ready BIOS that complies with V2.1 of the PCI specification. Load the default values of the BIOS and try installing the card again.

##### **The Core2 appears in the Device Manager with no resources assigned.**

Enter the system BIOS. Restart the computer and watch for a message telling you which key to press to enter your setup. Depending on the version and type of BIOS, locate the Plug and Play section and a parameter called Plug and Play OS Install, Plug and Play Aware, or something similar. Set this parameter to **No**.

##### **Computer crash and reboot when Lexicon IDS is removed from the Device Manager.**

Go into the Device Manager, open the System devices category, highlight the PCI bus entry and click the **Properties** button. Under the IRQ steering tab make sure IRQ Steering is unchecked.

**Notes:**

Windows versions 4.00.950 and 4.00.950A will not exhibit this problem. These versions do not have an IRQ steering tab or the option to enable Windows to steer IRQs. IRQ steering is done by the BIOS.

Windows versions 4.00.950B and 4.00.950C will exhibit this problem only if the option to enable IRQ Steering is enabled. Windows, by default, does not have this option enabled.

(Refer to Article number Q182604 in the Microsoft knowledgebase for a complete description of PCI bus IRQ steering.)

**Installer can not find the first file during Lexicon Studio installation**

At the start of the installation process, after Windows has identified the new hardware, it searches for the drivers. In some cases Windows will not search the correct drive, and you must manually specify the path to the A:\ drive (if installing with floppies) or the D:\ drive if installing from CD-ROM by clicking the **Browse** button. Once you have done this, click **Finish**. All of the drivers will be copied from the proper drive.

**Studio sharing an IRQ with 'IRQ Holder for PCI Steering' in Device Manager**

This is normal. An IRQ Holder for PCI Steering may be displayed when you view the System Devices branch of Device Manager. An IRQ Holder for PCI Steering indicates that an IRQ has been programmed to PCI mode and is unavailable for ISA devices, even if no PCI devices are currently using the IRQ.

**Various problems if you have incorrectly updated your Lexicon Studio software**

The following problems may appear if you incorrectly update Lexicon Studio drivers:

1. Clicking on the Launch Lxpanel icon in the System Tray causes the following message "Could not bring up Control panel" (with OK button)
2. No driver file appear in the Lxstudio Folder

**Reason:**

Update Driver was performed incorrectly. Selecting NO, for 'Do you want windows to search for a new driver?' causes the Device Driver Wizard to use the old .inf file from the previous version installed.

---

---

---

To remedy this problem:

Run the Device Driver Wizard again as follows:

1. From the Device manager select **Sound, Video and Game controllers**.
2. Double click on **Lexicon Studio Core2 System**.
3. Select the Driver tab
4. Select Update driver
5. Select YES (recommended) when the update Device Driver Wizard window opens.
6. Continue normally with the driver update

### **Audio Errors**

If your audio application does not boot, check the following:

1. Is the card present under the Device Manager? To check, go to the Window's Control Panel and double click on SYSTEM. This will bring up the System Properties window. Click on the Device Manager tab and find the Sound, Video and Game controller icon (or Multimedia). Expand the category and look for Lexicon IDS Sound System. A yellow exclamation point next to Lexicon Studio Sound System indicates your driver has been improperly installed.
2. Is an IRQ assigned? Is memory I/O assigned? Highlight the Lexicon Core2 and click on the **Properties** button. This brings up the LexiconCore2 Properties page. Click on the Resources tab. You will see a box called Resource Settings. If an IRQ and Memory are assigned, they will be displayed here. Also look below at the Conflicting device box to see if any conflicts are listed.

### **Pops and clicks**

- If you have a PCI-based VGA board , screen redraws may create pops, clicks or crashes. Turn VGA acceleration off. The Graphics accelerator slider is accessed by pressing the Graphics button in the Performance page of the System properties box. This may solve the problem.
- Contact the VGA card manufacturer and obtain the most recent drivers for that board and to report the problem.

- Minimize any unnecessary windows that are constantly redrawing
- Use an AGP (Accelerated Graphics Port) video card if your motherboard supports this.
- Verify that the SCSI card drivers are up to date.
- Verify all audio and data cables are securely fastened to their respective connectors.
- Try another Word clock source. Switch the word clock from internal to external or vice versa.

### ***Poor System Performance***

A computer with a fast CPU does not guarantee high performance. If your system is not performing as well as it should be, try some of these suggestions:

- Quit any open applications other than your audio software.
- Use a fast IDE drive for your audio. Getting audio off the PCI bus creates more bandwidth for the Lexicon Studio System. You might also try a fast SCSI drive with a PCI SCSI controller, which will yield performance almost as high as the IDE due to the faster speed of SCSI.
- Add memory.

## ***Optimizing Windows for Audio Applications***

Following are some suggestions that may improve your computer's performance as a dedicated digital audio workstation. Some of these suggestions disable some Windows 95 optimization features and may slow the overall performance of your system when using non-audio applications.

### ***Add Memory***

Adding RAM to your computer will reduce the chance that Windows needs to use Virtual Memory.

### ***Defragment Your Hard Drives***

Defragment your drives on a regular basis.

### ***Run Scan Disk Regularly***

Scan disk can detect and fix problems before they become fatal.

### ***Disconnect Any Mapped Drives That Are No Longer Connected To Your Computer***

Drives will appear in Explorer with a red “x” under them if the drive is no longer connected to your system.

### ***Verify no Drives are Compressed***

ControlPanel/System/Performance: Make sure it says “Not Installed” after Disk Compression

### ***Disable Write-Behind Disk Caching***

Sets the number of kilobytes that Win95 reads ahead. (Reading ahead makes the audio drive work harder than necessary.)

### ***Graphics Hardware Acceleration***

In non-AGP computer systems (computers using VGA cards), graphics acceleration settings can force your video card to hog the PCI bus. Crackling and zippering in the audio while opening and moving windows is a warning sign of this.

Try lowering the acceleration settings of your graphics hardware. This is done by going to **Start/Settings/Control Pane/System**, then selecting the Performance tab and clicking the **Graphics** button. A slider in this control panel allows you to select the amount of hardware acceleration. Try using **Basic Acceleration Functions** or **No Accelerator Functions** to reduce noise from PCI burden within your system.

### ***Read-Ahead Optimization***

If you find that you are getting noise when adding more tracks of hard disk audio, try this to optimize your system and increase the number of tracks within your system.

This control panel can be found by opening **Start/Settings/ Control Panel/System**, then selecting the Performance tab and clicking the **File System** button. This control panel optimizes the performance of your disk drives for particular applications. For audio systems, it is best to set the typical role for the machine to be a **Desktop System** or **File Server**. In either case, make sure your Read-Ahead Optimization is set for **None**.

### ***Set Virtual Memory To A Fixed Amount***

If you have sufficient memory it is possible to completely turn off Virtual Memory. If not, set this to 50-100MB.

### ***Use A Dedicated Drive For Audio***

Use the fastest drive available to you. Any drive sold as an AV drive will probably work. Try before you buy.

### ***Disable Screen Savers***

Screen savers, TSRs and Timeout features should be disabled. Disable any program or task that runs in the background.

### ***Disable Virus Protection Software***

Virus protection software typically runs in the background of the computer, taking up processing time from the CPU. Make sure your virus protection software is disabled while running your audio applications, but enable it periodically to check your system for viruses.

### ***Keep Your Drivers Up To Date (vga, midi, etc.)***

Contact your card manufacturer for any updates that are available. Keep the old drivers on hand in the event that the new drivers cause more problems.

### ***Compatibility Mode***

In Control panel/System/Performance if Win95 tells you it is running in “Compatibility Mode” it means that Windows drivers are not being used for some device. Try to resolve the problem.

### ***Edit System Files***

Editing of Windows and DOS system files should be attempted by experienced personnel only.

### ***Autoexec.bat & Config.sys -***

Settings for network drivers, CD-ROMS, video cards and the mouse may need to remain in these files but all other entries should be remarked out by placing REM in front of the line.

### ***win.ini -***

Load= or Run= should have no values after them.

### ***Set Disk Caching To A Fixed Amount***

Edit the system.ini [vcache] MinFileCache=x and MaxFileCache=x. Where x = 10-25% of the total system memory in Kilobytes.

### ***MS Plus***

- Disable “show window content while dragging” in Control Panel/Display/Plus.
- Disable low disk space notification in the System Agent and suspend the System Agent.
- Remove DriveSpace3 from Add and Remove programs

### ***Power Management Systems***

Some computers enable certain settings for power management of hard drives when they are not in use, dropping them into low power mode. Disable these settings for optimum performance. You will find these settings in Settings/Control Panel/Power.

Your particular BIOS may also have power management settings. These should also be disabled. Refer to your BIOS manual or contact its manufacturer for information on how to accomplish this.

**TIP: Back up your system on a regular basis**

---

---

---

---

# 6

## Specifications

### Analog Inputs

**Connectors** Unbalanced TS 1/4" Phone Jack

**Impedance** > 25k $\Omega$

#### A/D Dynamic Range

105dB typical, 20kHz bandwidth

107dB typical, A weighted

**Levels** -18dBV to +14dBV full scale, adjustable

**Sample Rates** 44.1kHz, 48kHz

#### Frequency Response

20Hz to 20kHz  $\pm 0.5$ dB, ref 1 kHz

**Crosstalk** < -96dB @ 1kHz

**THD** < 0.005%, 20Hz to 20kHz

**Resolution** 24 Bits Delta-Sigma Conversion

### Analog Outputs

**Connectors** Unbalanced TS 1/4" Phone Jack

**Impedance** 150 $\Omega$  nominal

#### D/A Dynamic Range

100dB typical, 20kHz bandwidth

102 dB typical, A weighted

**Levels** + 8dBV, full scale

#### Frequency Response

20Hz to 20kHz  $\pm 1$ dB, ref 1 kHz

**Crosstalk** < -96 dB @ 1 kHz

**THD** < 0.005%, 20 Hz to 20 kHz

**Resolution** 24 Bits Delta-Sigma Conversion

### Digital Audio Interface

#### Input Connectors

Coaxial RCA (24-bit S/PDIF or TTL Word Clock)

Optical (24 bit S/PDIF or 24 bit ADAT)

#### Output Connectors

Coaxial RCA (24 bit S/PDIF)

Optical (24 bit S/PDIF or 24 bit ADAT)

**Sample Rates** 44.1 kHz, 48 kHz

#### Word Clock Sources

ADAT, S/PDIF, external TTL Word Clock, or Internal

### System Specifications

#### Computer Interface

33 MHz/32-bit PCI Master/Slave Interface

**Internal Interface** Option board connector

**Power Requirements** +5v  $\pm 5\%$

**Clock Range** 44.1 kHz  $\pm 2\%$ , 48 kHz  $\pm 2\%$

**FCC Rating** Class B

**Operating Temperature** 32°-104°F (0-40°C)

### Bundled Software

Lexicon Drivers and Control Panel, Syntrillium Cool Edit Pro

*Specifications subject to change without notice.*

