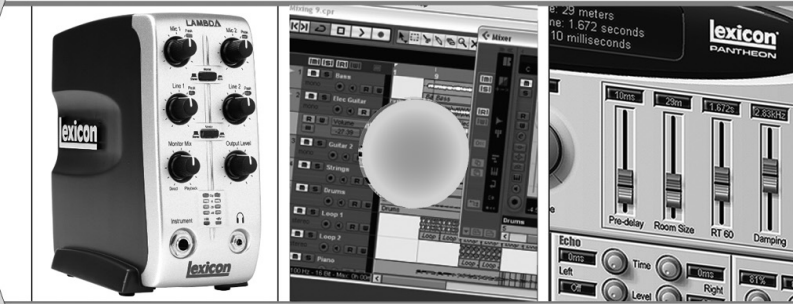


LAMBDA STUDIO™ Software Installation Guide



SOFTWARE INSTALLATION CD v2.0

lexicon®

INCLUDES: Lambda Studio USB Drivers
Steinberg® Cubase LE®
Lexicon Pantheon™

Compatible with Windows® Vista, XP Home, and XP Professional, and Mac® OS X ver. 10.2.8 or later | © 2007 Harman International | 1-800-445-9

lexicon®

USB Device Drivers, Cubase
LE® 4 Setup, and Pantheon™
Reverb Plug-in for
Windows® Vista and XP

Cubase LE® 4 Setup and
Pantheon™ Reverb
Plug-in for Mac® OS X

Congratulations on your purchase of the Lexicon Lambda Studio™. This guide contains the information needed to install the required USB drivers and Steinberg's Cubase® LE 4 recording software for use with your Lexicon Lambda hardware on either Windows® Vista, Windows XP or Mac® OS X computer systems. Please follow these instructions carefully to ensure smooth installation of each of these components.

LAMBDA STUDIO™ FOR WINDOWS® VISTA AND XP USERS

A. INSTALLING THE LEXICON USB DRIVERS, CUBASE® LE 4, AND PANTHEON PLUG-IN

You must install the USB drivers to use your Lexicon Lambda's USB connection with your computer. During the installation process, you will have the option of installing Cubase LE 4 and the Pantheon reverb plug-in. Follow the on-screen directions to successfully install these items.

1. Disconnect the Lambda hardware from your computer if it is connected and close any open programs, windows, and cancel any open dialog boxes.
2. Insert the included Lambda Installer CD into your computer's CD ROM drive.
3. The installer should automatically run. If it doesn't, select **Start > Run (XP)** or **Start > All Programs > Accessories > Run (Vista)** and type in **D:\setup.exe** (where D:\ is the letter of your CD ROM drive) and click **OK**.
4. Once the installer begins, follow the on screen instructions to complete the software installation.
5. Once installation is completed, continue to **Section B - Setup Windows Audio and MIDI** to configure the newly installed software.

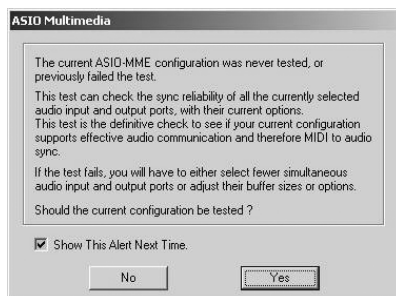
B. SETUP WINDOWS AUDIO AND MIDI (Optional)

When the Lexicon USB Audio and MIDI drivers were installed, Windows may have automatically selected them as your default audio and MIDI outputs. This means that your Windows sounds will be sent to the Lambda rather than your computer's sound card. We need to check if these have been changed and return the settings to what they were before.

1. Select **Start > Control Panel > Sound and Audio Devices (XP)** or **Hardware and Sound (Vista)**.
2. Select the **Audio tab (XP)** or **Manage Audio Devices (Vista)**.
3. Under **Sound Playback > Default device (XP)**, or **Playback (Vista)**, make sure your computer's sound card is selected as the default device.
4. Under **Sound Recording > Default device (XP)**, or **Recording (Vista)**, make sure your computer's sound card is selected as the default device.
5. Under **MIDI Music Playback > Default device**, open the pull-down menu and make sure your MIDI device is selected as the default device (XP only).

C. USING CUBASE LE 4 WITH THE LEXICON LAMBDA STUDIO

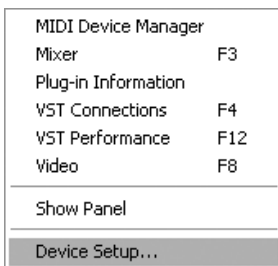
1. Start Cubase LE 4. The first time you use Cubase LE 4 with the Lexicon Lambda Studio you may be asked to run the Multimedia test as shown below. Select **No**.



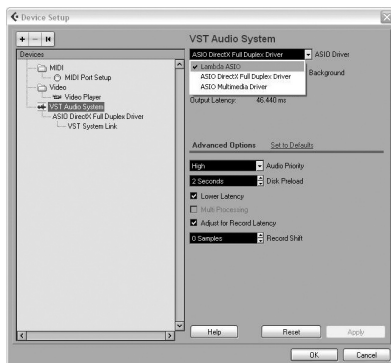
2. Cubase LE 4 may display the following warning that configuration has not been tested. Click **OK**.



3. Once you are into Cubase, go to **Devices > Device Setup**.



4. Under Devices, click on **VST Audio System** and select **Lambda ASIO** from the ASIO Driver pull-down menu if it is not already selected. Click on Switch to switch the driver and click **OK**. You are now ready to begin recording using your Lambda Studio™ and Cubase LE 4.

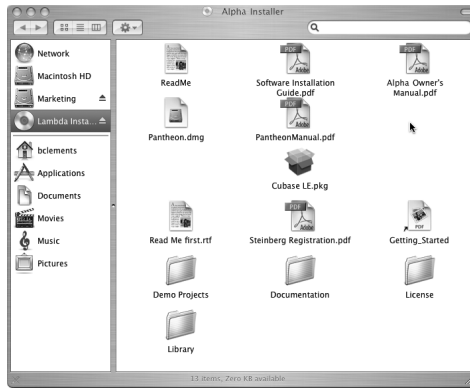


LAMBDA FOR MAC® USERS

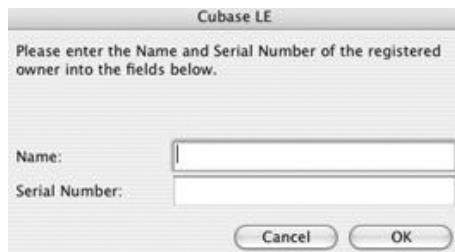
The Lambda hardware is designed to interface directly with your Mac computer via USB using OS X's Core Audio drivers. This means no separate driver installation is needed as long as your Mac system software is 10.2.8 or greater (see Apple's website for software update information if your system software is earlier than 10.2.8).

A. INSTALLING CUBASE LE 4 RECORDING SOFTWARE FOR MAC

1. Start your computer. Close any open programs you have running. Place the Lambda Studio Software Installation disk in your CD-ROM drive.
2. Double-click the **Lambda Installer CD** icon when it appears on your desktop.
3. When the Lexicon Installer window opens, double-click on the **Cubase LE 4.pkg installer** icon and then click **Continue**.



4. Click **Accept** to agree to the terms of the Software Licensing Contract and continue.
5. Choose your desired installation folder, or use the default setting and select **Install**.
6. Enter your registration information as directed by the Cubase LE 4 Installer. Your Authorization Number is printed on the back of the Lexicon Lambda Studio Software Installation CD sleeve. You must include the hyphens when entering the number. Select **OK** to continue with the installation after you've entered your name and serial number.



7. Follow the instructions of the onscreen prompts. When the installation is finished, click **Quit**.

B. INSTALLING THE LEXICON PANTHEON™ FOR MAC

1. Click on the **Pantheon.dmg** installer icon. Next, click **Continue** and then **Install**. When the License Agreement appears, click **Agree** then wait for the Installer to finish and click **Quit**.

C. SETTING UP CUBASE LE 4 FOR USE WITH THE LAMBDA STUDIO™

1. Take your Lexicon Lambda hardware out of the box and plug the power in.
2. Connect the included USB cable to your computer and to the Lambda Studio™.
3. Open Cubase LE 4, and go to **Devices > Device Setup** as shown below.



4. Click **VST Multitrack** and select **Lexicon Lambda In/Out (2)** as the ASIO Driver (as shown below). DO NOT select Lexicon Lambda In/Out (1).



5. Cubase LE 4 will now ask you if you would like to switch the driver. Select **Switch** then **OK**.



You are now ready to start recording with Cubase LE 4.

Lexicon Lambda Support

As new recording software becomes available, the Lexicon Lambda can be updated to ensure it works properly with these applications. Please check the Lexicon website for future update information.

Lexicon®

8760 South Sandy Parkway

Sandy, UT 84070

Tel: (801) 566-8800

Fax: (801) 566-7005

<http://www.lexiconpro.com>

H A Harman International Company

 **CUBASE LE₄**

 **ASIO**

Cubase and ASIO are trademarks of Steinberg Media Technologies GmbH.

Lexicon uses the Nullsoft Scriptable Install System (NSIS) - Copyright ©1999-2007 Nullsoft, Inc.